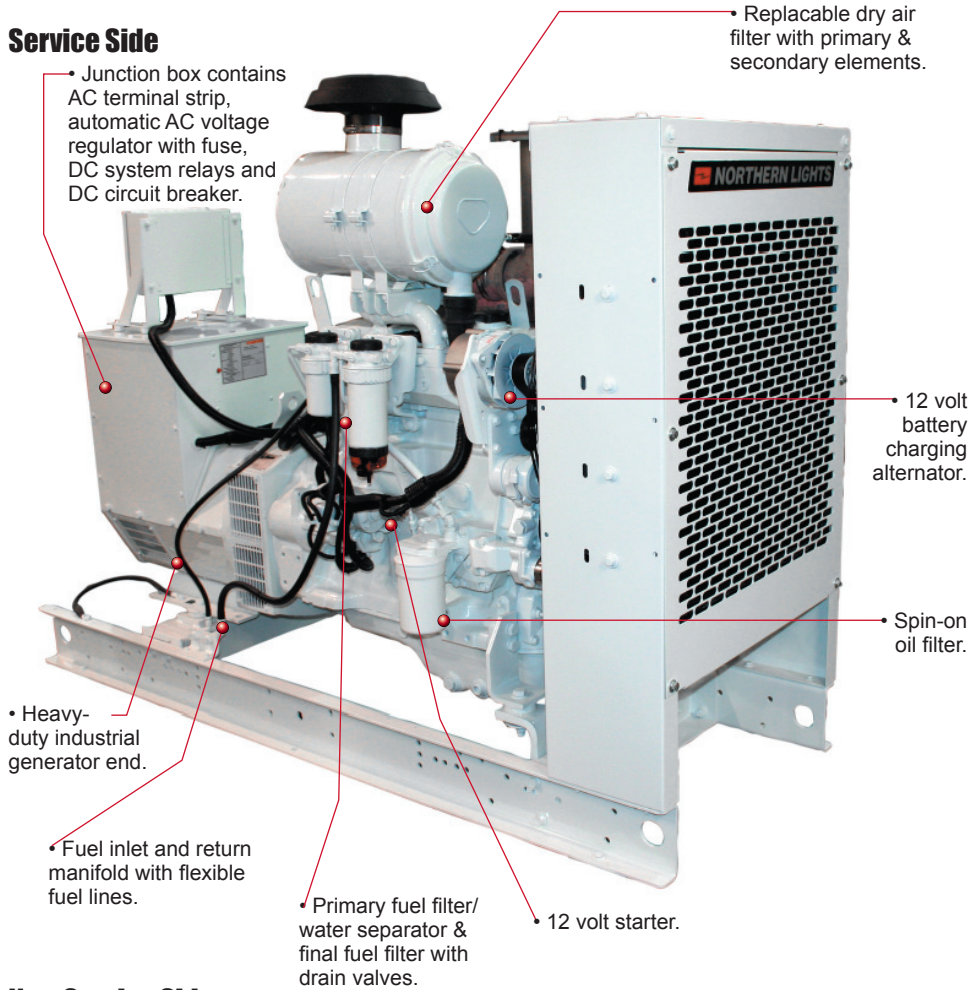
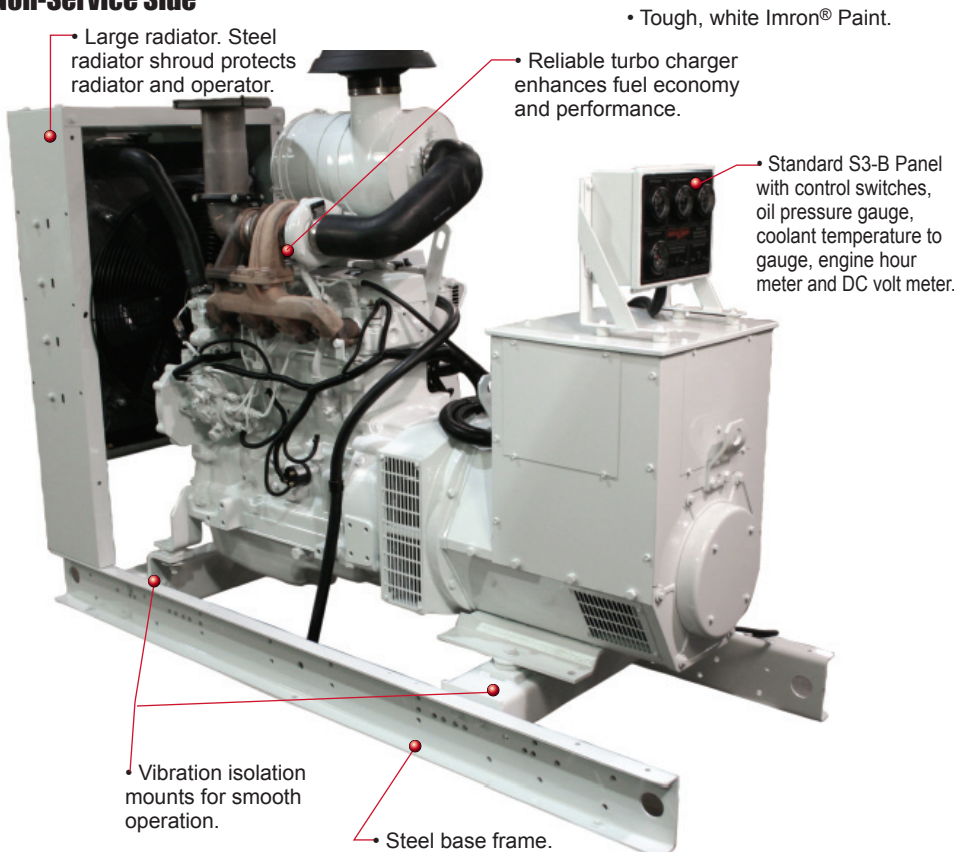


Service Side



Non-Service Side



50 kW
60 Hz / 1800 RPM - Prime

54 kW
60 Hz / 1800 RPM - Standby

Prime power experience

Since 1958, Northern Lights' success has been based on our obsession with innovative, application-specific design, quality control and unit reliability. This has made our Northern Lights land-based generator sets the recognized industry standard of excellence.

Terrific economy

The NL1064T23 is a power system that provides economical prime power or reliable standby protection. Powered by a four cylinder inline, two valve per cylinder John Deere mechanically controlled engine the NL1064T23 is designed to meet all current EPA, CARB and EU emissions standards.



Clean, light, quiet

All Northern Lights generators are engineered to be easy to install, operate and maintain. The NL1064T23 produces peak torque at low rpm to dramatically reduce engine wear-and-tear. Boasting a self-venting fuel system and mounted control panel, the NL1064T23 is ready to "plug and play" into your electrical system

Keeping it simple

Single side service points, for easy access filter and drains. Owner's manuals available in print or on CD-ROM, are among the features that simplify the NL1064T23's maintenance.

Industry best warranty

The genset's quality allows us to back it with an industry-leading one year, unlimited hour, warranty. This, along with single-source supply and a global dealer network, assures you of quick and total product support.

Fully customizable

Special needs? Let our engineers use the NL1064T23 as a foundation for a custom set designed for your power requirements.



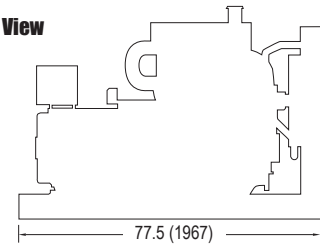
AC Output ¹	
50 kW - Prime	60 Hz, 1800 RPM
54 kW - Standby	60 Hz, 1800 RPM
Voltage regulation	±1.5%
Standard phase (optional)	3 (1)
Std. low volt (WYE)	120 (208)
amps - prime @ 0.8 PF	174
amps - prime @ 0.8 PF	188
Std. high volt (WYE)	277 (480)
amps - prime @ 0.8 PF	75
amps - prime @ 0.8 PF	81
Optional voltage (WYE)	127/220 thru 254/480
Optional voltage (Delta)	10 417/208 thru 120/240
Motor starting	
Max. KVA @ 25% dip	140-170 w/PMG
Lugger L1064T Engine	
Displacement	276 cid (4.5 ltr)
Bore/Stroke	4.19/5.00 in (106/127 mm)
BHP - prime	76
BHP - standby	85
Installation Data & Weight	
Min. exhaust outlet	4 inch (63.5 mm)
Fuel inlet and return	3/8 inch NPT
Approximate dry weight	1960 lbs (888 kg)

Approximate Fuel Use	
Full load - prime	4.2 gph (15.8 lph)
Full load - standby	4.6 gph (17.4 lph)
3/4 load - prime	3.2 gph (12.1 lph)
3/4 load - standby	3.4 gph (12.8 lph)
1/2 load - prime	2.1 gph (7.9 lph)
1/2 load - standby	2.3 gph (8.7 lph)
Full Max fuel flow - prime	16.5 gph (62.4 lph)
Max fuel lift	39 in (1 m)
Air	
Combustion air - prime	180 cfm (5.1 m³m)
Combustion air - standby	187 cfm (5.3 m³m)
Generator cooling air	595 cfm (16.8 m³m)
Radiator cooling air	3970 cfm (112 m³m)
Cooling and Lubrication	
Heat rejected to coolant -prime	1878 btu/min
Heat rejected to coolant -standby	2049 btu/min
Lube oil capacity	3.9 US gal (14.7 ltr)
Exhaust	
Exhaust gas flow - prime	645 cfm (18.3 m³m)
Exhaust gas flow - standby	679 cfm (19.2 m³m)
Max. exhaust temp - prime	1024° F (551° C)
Max. exhaust temp - standby	1074° F (579° C)
Max. back pressure	30 in (762 mm) H ₂ O

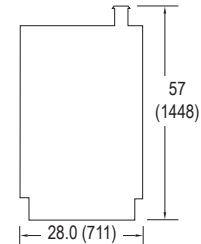
NOTES: 1 - Deratings: 3% per 1000 ft over 500 ft above sea level. 5% for every 10° over 77° F. 2 - Three phase rated at 0.8 power factor. Single phase rated at 1.0 PF. 3 - US gallons per hour. Actual fuel consumption will vary depending on operating conditions.

NL1064T23 Dimensional Drawing

Side View



Front View



NL1064T23 Overall Dimensions L x W x H:
77.5 x 28 x 57 inch (1967 x 711 x 1448 mm)
Dimensions not intended for installation.
Dimensions subject to change without notice.
Contact dealer or visit www.northern-lights.com
for most current installation drawings.

Features and Benefits

Engine Block

- John Deere-base, 4 cylinder in-line, two valve per cylinder diesel engine designed to produce peak torque at low RPM.
- Turbo charged to increase performance and lower emissions.
- Replaceable cylinder liners for long life and low rebuild costs.
- Balanced, forged crankshaft with induction hardened fillets.
- Twin balancing shafts rotate at twice engine speed to counteract vertical forces and provide smooth operation.
- Liquid cooled with radiator. Poly-vee single belt fan drive system. Pusher cooling fan has hand guard to protect operator. Steel radiator shroud standard.
- Four cycle operation and direct injection for fuel economy and low noise.
- Engine mounted secondary and primary fuel filters with drain valves.
- Fuel lines routed to fuel manifold on base frame for easy installation.
- Full flow, spin-on oil filter with bypass.
- Jacket water engine oil cooler reduces heat and thermal breakdown of lube oil.
- Oil spray piston cooling.
- High ring pistons with patented combustion bowl maximizes operating efficiencies and low emissions.
- Shipped with lube oil.
- Large, dry element, industrial air filter protects engine in dusty environment.
- 12 volt system with starter motor, battery charging alternator and regulator.
- Low oil pressure and high coolant temperature shutdown systems.



- Every set is load bank tested with controls installed.
- Standard S3-B Panel with control switches, oil pressure gauge, coolant temperature gauge, engine hour meter and DC volt meter.

AC Generator

- Stamford generator end, direct coupled, single bearing, 12 lead, reconnectable generators are torsionally matched with engine.
- Brushless design is maintenance free.
- Generators meet or exceed NEMA and BS standards with class H insulation, accessible diodes, oversized ball bearing and conservative 105° C temperature rise at prime rating (130° C at standby).
- Automatic voltage regulators give quick response, excitation support and stable paralleling. Voltage is regulated to +/-1.5% RMS from no load to full load.

Special Set Features

- Heavy duty, steel base frames.
- Long life white Imron® paint for optimal service visibility.
- Center bonded vibration isolation mounts reduce noise and vibration.
- Parts and operator's manuals standard.

Accessories and Optional Equipment

- Control panels:
AC and DC monitoring panel.
S-7 Manual & Auto start control panels with AC & DC monitoring gauges including up to 16 fault/function lights.
- Manual transfer switches
- Automatic transfer switches
- Circuit breakers
- Alarms and shut down systems:
Overspeed , overcrank, shutdown. Low coolant level shutdown. Low coolant level shutdown.

- Exhaust muffler system: Residential, Critical
- Heaters and tanks: Jacket water heater, lube oil heaters, day tank, subbase fuel tank, dry sump lube oil tank.
- Enclosures: Weather enclosure, arctic environment enclosure, sound attenuation enclosure and trailer mounted enclosure.
- Custom painting
- Export crating

Accessories and Optional Equipment



Let your dealer help you custom design a set that matches your special application using the complete line of Northern Lights accessories.

Dealer

4420 14th Ave. NW., Seattle WA 98107
Tel: (206) 789-3880 • 1-800-762-0165 • Fax: (206) 782-5455
Information and dimensions subject to change without notice.
Northern Lights and Lugger are registered trademarks
of Northern Lights, Inc.
© 2011 All rights reserved. Litho USA. L736 03/11



www.northern-lights.com